

Einführung der schriftlichen Division

$$\begin{array}{r} 795 : 5 = \square\square\square \\ - \\ \hline \\ - \\ \hline \\ - \\ \hline \end{array}$$



$$\begin{array}{r} 477 : 9 = \square\square \\ - \\ \hline \\ - \\ \hline \end{array}$$



$$\begin{array}{r} 852 : 3 = \square\square\square \\ - \\ \hline \\ - \\ \hline \\ - \\ \hline \end{array}$$

$$\begin{array}{r} 276 : 6 = \square\square \\ - \\ \hline \\ - \\ \hline \end{array}$$

$$\begin{array}{r} 5145 : 7 = \square\square\square \\ - \\ \hline \\ - \\ \hline \\ - \\ \hline \end{array}$$



$$\begin{array}{r} 992 : 8 = \square\square\square \\ - \\ \hline \\ - \\ \hline \\ - \\ \hline \end{array}$$

$$\begin{array}{r} 855 : 9 = \square\square \\ - \\ \hline \\ - \\ \hline \end{array}$$

$$\begin{array}{r} 728 : 2 = \square\square\square \\ - \\ \hline \\ - \\ \hline \\ - \\ \hline \end{array}$$



$$\begin{array}{r} 9872 : 4 = \square\square\square\square \\ - \\ \hline \\ - \\ \hline \\ - \\ \hline \end{array}$$

$$\begin{array}{r} 498 : 6 = \square\square \\ - \\ \hline \\ - \\ \hline \end{array}$$

$$\begin{array}{r} 8247 : 3 = \square\square\square\square \\ - \\ \hline \\ - \\ \hline \\ - \\ \hline \end{array}$$



Schriftliche Division



$172 : 2 =$



$475 : 5 =$



$3388 : 4 =$

$518 : 7 =$

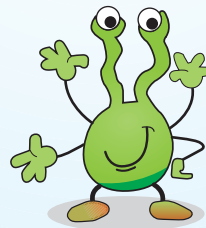


$496 : 8 =$

$2082 : 3 =$

$747 : 9 =$

$3745 : 5 =$



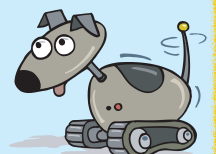
$1516 : 2 =$

$444 : 6 =$

$3424 : 8 =$

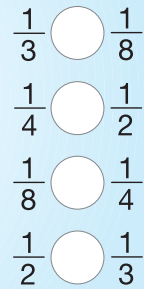
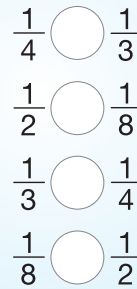
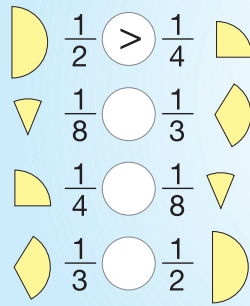
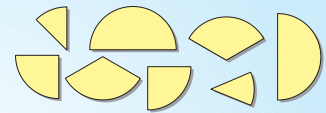


$96 : 4$ $94 : 2$ $564 : 3$ $475 : 5$ $4858 : 7$ $9695 : 7$ $17988 : 4$
 $75 : 5$ $87 : 3$ $932 : 4$ $968 : 8$ $8028 : 9$ $3216 : 6$ $28365 : 5$



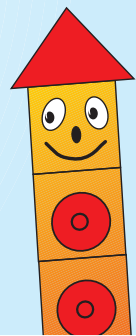
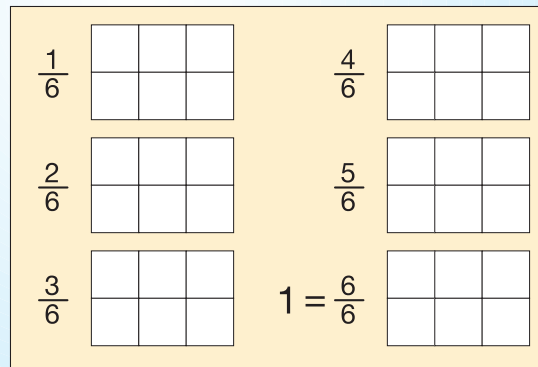
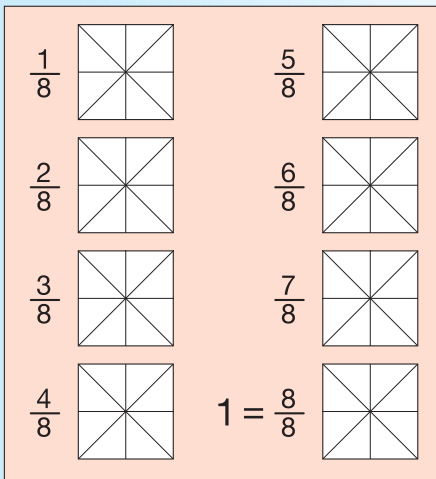
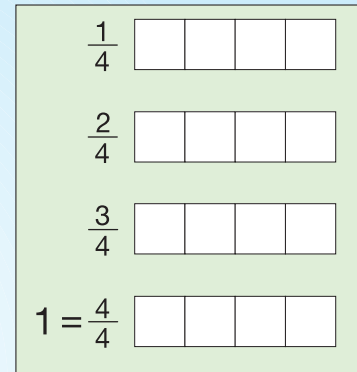
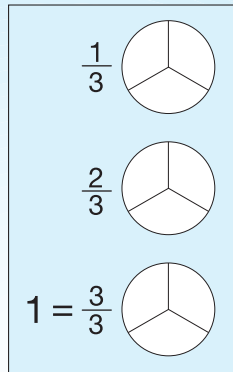
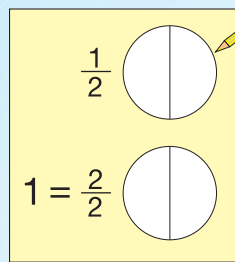
Brüche vergleichen und darstellen

1 Schneide Kreisteile* aus!
Lege und vergleiche!

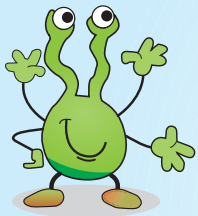


*Druckvorlage auf Homepage

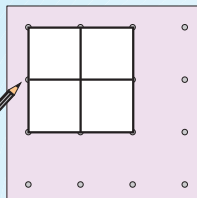
2 Male!



3

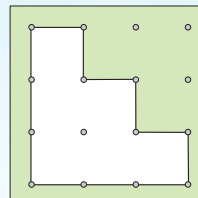


Male Viertel!



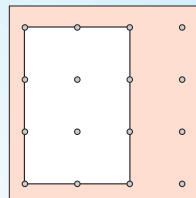
Färbe $\frac{3}{4}$!

Male Sechstel!



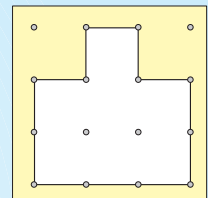
Färbe $\frac{4}{6}$!

Male Hälften!



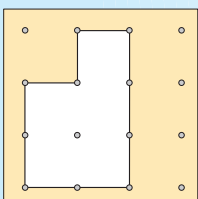
Färbe $\frac{1}{2}$!

Male Siebtel!



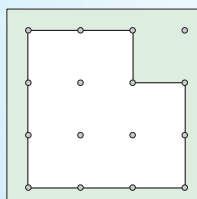
Färbe $\frac{3}{7}$!

Male Fünftel!



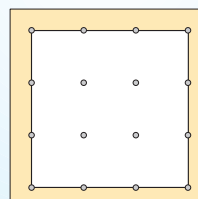
Färbe $\frac{4}{5}$!

Male Achtel!



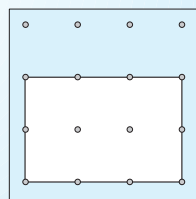
Färbe $\frac{3}{8}$!

Male Neuntel!



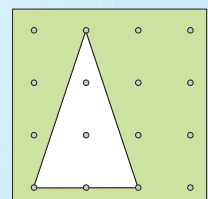
Färbe $\frac{5}{9}$!

Male Drittel!



Färbe $\frac{2}{3}$!

Male Hälften!

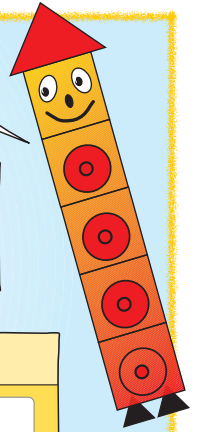


Färbe $\frac{1}{2}$!

Verkürzte Komma- schreibweise bei Liter

1

Aus Platzgründen werden die **Endnullen** hinter dem Komma oft nicht angegeben.



1 200 ml
1,2 l

3 700 ml

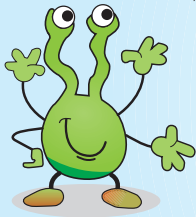
800 ml

$\frac{1}{2}$ l

$\frac{3}{4}$ l

$1\frac{1}{4}$ l

2



$4,2\text{ l} + 2,3\text{ l} = \square, \square$

$5,3\text{ l} + 4,4\text{ l} = \square, \square$

$2,6\text{ l} + 3,2\text{ l} = \square, \square$

$6,4\text{ l} + 1,5\text{ l} = \square, \square$

$8,6\text{ l} - 4,2\text{ l} = \square, \square$

$6,8\text{ l} - 5,5\text{ l} = \square, \square$

$9,9\text{ l} - 6,4\text{ l} = \square, \square$

$7,5\text{ l} - 2,3\text{ l} = \square, \square$

3

$4\text{ l} - 0,4\text{ l} = \square, \square$

$6\text{ l} - 0,8\text{ l} = \square, \square$

$2\text{ l} - 0,7\text{ l} = \square, \square$

$1\text{ l} - 0,6\text{ l} = \square, \square$

$3\text{ l} + 4,2\text{ l} = \square, \square$

$8\text{ l} + 1,9\text{ l} = \square, \square$

$5\text{ l} + 3,3\text{ l} = \square, \square$

$4\text{ l} + 2,6\text{ l} = \square, \square$

$5\text{ l} - 1,2\text{ l} = \square, \square$

$7\text{ l} - 2,4\text{ l} = \square, \square$

$6\text{ l} - 4,5\text{ l} = \square, \square$

$9\text{ l} - 3,3\text{ l} = \square, \square$

4

$+ 0,8\text{ l}$	
1,6 l	
3,5 l	
5,4 l	
0,8 l	

$- 0,7\text{ l}$	
3,2 l	
6,6 l	
2,5 l	
1,4 l	

$2,8\text{ l} + 0,6\text{ l} = \square, \square$

$9,3\text{ l} - 0,8\text{ l} = \square, \square$

$5,9\text{ l} + 0,9\text{ l} = \square, \square$

$8,2\text{ l} - 0,7\text{ l} = \square, \square$

$4,7\text{ l} + 0,5\text{ l} = \square, \square$



5

$+ 1,7\text{ l}$	
3,8 l	
1,5 l	
2,7 l	
0,9 l	

6,6 l	$+ 2,8\text{ l}$	
6,6 l	$- 2,8\text{ l}$	

3,5 l	$+ 1,7\text{ l}$	
3,5 l	$- 1,7\text{ l}$	

$- 2,6\text{ l}$	
3,4 l	
5,1 l	
7,3 l	
4,5 l	

① $5 \cdot (55 + 5) = \square$
 $400 - 6 \cdot 20 = \square$
 $(90 + 70) : 4 = \square$
 $520 + 80 \cdot 3 = \square$
 $(600 - 40) : 8 = \square$
 $4 \cdot (120 + 80) = \square$

$600 - 5 \cdot 40 = \square$
 $(120 - 30) \cdot 7 = \square$
 * $480 : 6 + 40 = \square$
 $490 + 30 \cdot 7 = \square$
 $(720 + 180) : 3 = \square$
 $900 - 9 \cdot 50 = \square$

**Punkt vor
Strich
und Rechnen
mit Klammern**

② $5 \cdot (9 + 6 + 5) = \square$
 $5 \cdot 9 + 6 \cdot 5 = \square$

$8 \cdot (7 + 8 - 4) = \square$
 $8 \cdot 7 + 8 \cdot 4 = \square$



* $(2000 + 700 + 300) \cdot 3 = \square$
 $2000 + 700 + 300 \cdot 3 = \square$

$(7000 + 800 + 200) \cdot 3 = \square$
 $7000 + (800 + 200) \cdot 3 = \square$

③ $4 \cdot 60 + 40 \cdot 5 = \square$
 $4 \cdot (60 + 40) - 5 = \square$
 $4 \cdot (60 + 40 + 5) = \square$
 $4 \cdot 60 - 40 : 5 = \square$

$(8000 + 3000 - 2000) \cdot 4 = \square$
 * $8000 + 3000 + 2000 \cdot 4 = \square$
 $8000 + (3000 + 2000) \cdot 4 = \square$
 $8000 + 3000 - 2000 : 4 = \square$

④ $(7 + 4) \cdot 5 + (8 - 3) \cdot 7 = \square$
 $\square + \square = \square$

$(280 + 40) : 4 - (250 - 70) : 3 = \square$
 $\square - \square = \square$

$(42 + 8) \cdot 8 + (100 - 40) \cdot 6 = \square$
 $\square + \square = \square$

$(500 - 20) : 6 - (140 - 60) : 4 = \square$
 $\square - \square = \square$

⑤ Für Spezialisten: Ergänze die Rechenzeichen!



$8 \bigcirc (4 \bigcirc 7) = 88$

$9 \bigcirc 6 \bigcirc 3 = 57$

$40 \bigcirc (2 \bigcirc 6) = 320$

$8 \bigcirc 4 \bigcirc 7 = 25$

$(9 \bigcirc 6) \bigcirc 3 = 9$

$40 \bigcirc 2 \bigcirc 6 = 26$

$(8 \bigcirc 4) \bigcirc 7 = 28$

$9 \bigcirc 6 \bigcirc 3 = 11$

$(40 \bigcirc 2) \bigcirc 6 = 7$

$8 \bigcirc 4 \bigcirc 7 = 9$

$9 \bigcirc (6 \bigcirc 3) = 81$

$40 \bigcirc 2 \bigcirc 6 = 28$