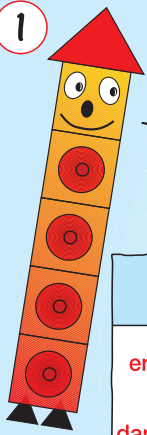


1



Addiere und subtrahiere erst die Zehner, dann die Einer!

$$46 + 26 = \square$$

erst Z $46 + 20 = \square$

dann E $\square + \square = \square$

$$65 - 47 = \square$$

erst Z $\square - \square = \square$

dann E $\square - \square = \square$

$$55 + 39 = \square$$

erst Z $\square + \square = \square$

dann E $\square + \square = \square$

$$92 - 64 = \square$$

erst Z $\square - \square = \square$

dann E $\square - \square = \square$

$$67 + 17 = \square$$

erst Z $\square + \square = \square$

dann E $\square + \square = \square$

$$84 - 28 = \square$$

erst Z $\square - \square = \square$

dann E $\square - \square = \square$

Addition und Subtraktion zweistelliger Zahlen

- Päckchenschreibweise -

2 Addiere und subtrahiere in zwei Schritten!

$$45 + 38 = \square$$

$\square + \square = \square$

$\square + \square = \square$

$$62 - 27 = \square$$

$\square - \square = \square$

$\square - \square = \square$

$$58 + 13 = \square$$

$\square + \square = \square$

$\square + \square = \square$

$$94 - 56 = \square$$

$\square - \square = \square$

$\square - \square = \square$

$$73 - 45 = \square$$

$\square - \square = \square$

$\square - \square = \square$

$$28 + 34 = \square$$

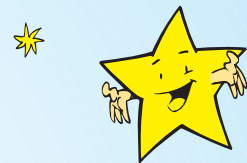
$\square + \square = \square$

$\square + \square = \square$

$$85 - 66 = \square$$

$\square - \square = \square$

$\square - \square = \square$



$$47 + 16 = \square$$

$\square + \square = \square$

$\square + \square = \square$

$$51 - 44 = \square$$

$\square - \square = \square$

$\square - \square = \square$

$$49 + 37 = \square$$

$\square + \square = \square$

$\square + \square = \square$

$$66 - 28 = \square$$

$\square - \square = \square$

$\square - \square = \square$

$$82 - 35 = \square$$

$\square - \square = \square$

$\square - \square = \square$

$$25 + 67 = \square$$

$\square + \square = \square$

$\square + \square = \square$

$$77 - 39 = \square$$

$\square - \square = \square$

$\square - \square = \square$

$$58 + 26 = \square$$

$\square + \square = \square$

$\square + \square = \square$

$$43 - 26 = \square$$

$\square - \square = \square$

$\square - \square = \square$



$$68 + 17 = \square$$

$\square + \square = \square$

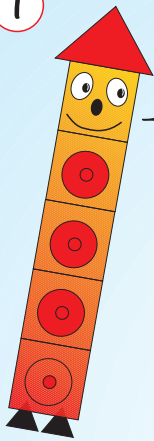
$\square + \square = \square$

$$85 - 57 = \square$$

$\square - \square = \square$

$\square - \square = \square$

1



Kreuze die richtige Antwort an!

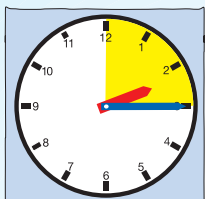


Uhrzeiten

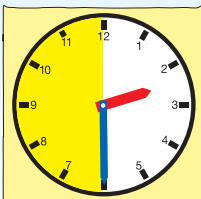
Viertel vor ...

Viertel nach ...

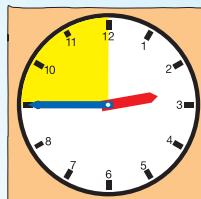
halb ...



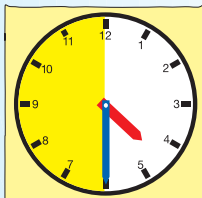
- Viertel nach 2
- Viertel vor 2



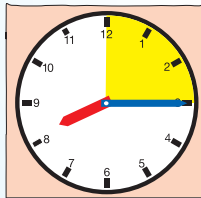
- halb 2
- halb 3



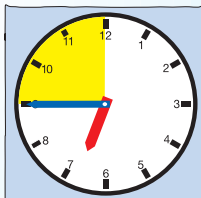
- Viertel nach 3
- Viertel vor 3



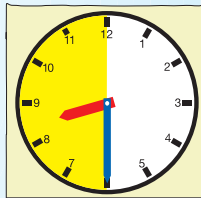
- halb 6
- halb 5



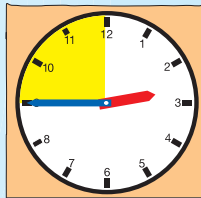
- Viertel nach 8
- Viertel vor 8



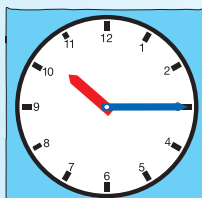
- Viertel vor 7
- Viertel nach 7



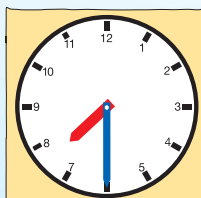
- halb 8
- halb 9



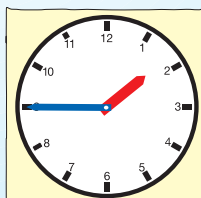
- Viertel nach 3
- Viertel vor 3



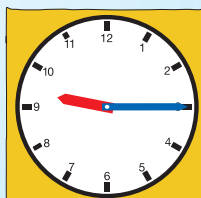
- Viertel nach 10
- Viertel nach 9



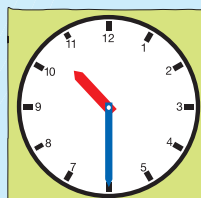
- halb 7
- halb 8



- Viertel vor 2
- Viertel vor 3

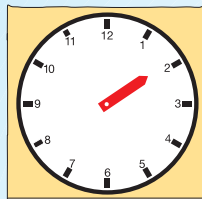


- Viertel nach 8
- Viertel nach 9

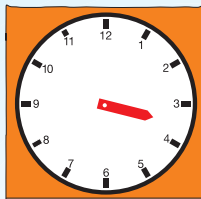


- halb 11
- halb 10

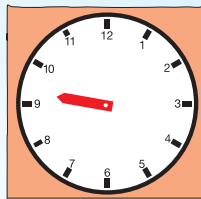
2 Ergänze die Minutenzeiger!



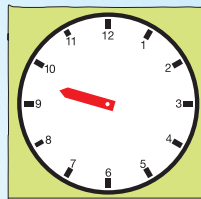
Viertel vor 2



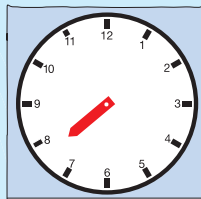
halb 4



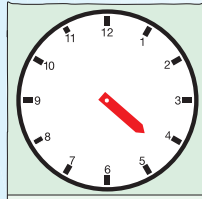
Viertel nach 9



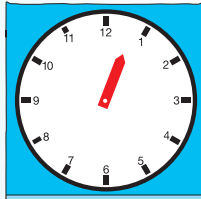
halb 10



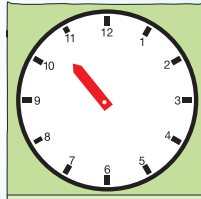
Viertel vor 8



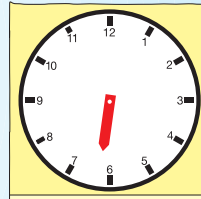
Viertel nach 4



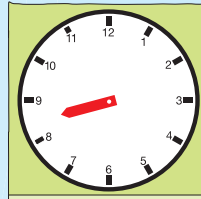
Viertel vor 1



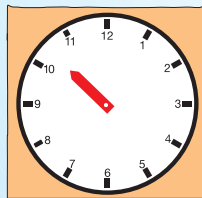
halb 11



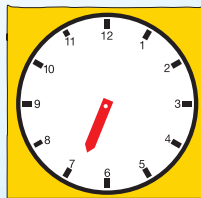
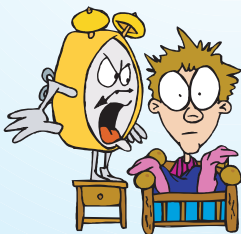
Viertel nach 6



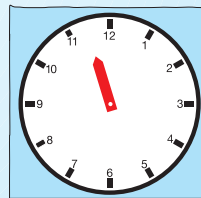
halb 9



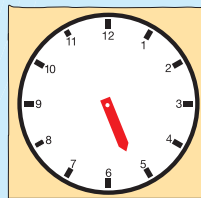
Viertel nach 10



Viertel vor 7

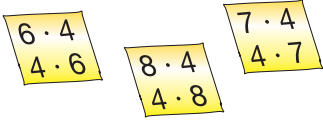


halb 12



Viertel nach 5

Einmaleins der 4



schwierige Malaufgaben

1 4er-Reihe



Lerne
auswendig!

bekannt

$0 \cdot 4 = \square$

$4 \cdot 4 = \square$

$1 \cdot 4 = \square$

$3 \cdot 4 = \square$

$2 \cdot 4 = \square$

$9 \cdot 4 = \square$

$5 \cdot 4 = \square$

$10 \cdot 4 = \square$

neu

$6 \cdot 4 = \square$

$7 \cdot 4 = \square$

$8 \cdot 4 = \square$

2

6 · 4 =

⊕ · 4 =

· 4 =

8 · 4 =

⊕ · 4 =

· 4 =

7 · 4 =

⊕ · 4 =

· 4 =

6 · 4 =

⊕ · 4 =

· 4 =

8 · 4 =

⊖ · 4 =

· 4 =

4 · 7 =

⊕ · 7 =

· 7 =

4 · 8 =

⊖ · 8 =

· 8 =

4 · 6 =

⊕ · 6 =

· 6 =

3

24

· 4

· 8

· 6

$4 \cdot 4 = \square$

$8 \cdot 4 = \square$

$4 \cdot 6 = \square$

$9 \cdot 4 = \square$

·	4	6	9
4			
7			
6			

$4 \cdot 7 = \square$

$5 \cdot 4 = \square$

$4 \cdot 8 = \square$

$6 \cdot 4 = \square$

4

6 · 0 =

6 · 2 =

6 · 4 =

6 · 9 =

4 · 1 =

4 · 3 =

4 · 5 =

4 · 7 =

9 · 3 =

9 · 4 =

9 · 7 =

9 · 9 =

4 · 2 =

4 · 4 =

4 · 6 =

4 · 8 =

5

< = >

$6 \cdot 4 \bigcirc 25$

$9 \cdot 4 \bigcirc 35$

$8 \cdot 4 \bigcirc 32$

$7 \cdot 4 \bigcirc 27$

< = >

$4 \cdot 5 \bigcirc 21$

$3 \cdot 4 \bigcirc 12$

$4 \cdot 7 \bigcirc 29$

$4 \cdot 6 \bigcirc 23$



	0	1	2	3	4	5	6	7	8	9	10
0											
1											
2											
3											
4											
5											
6											
7											
8											
9											
10											

Dividieren ohne Rest

$$25 : 5 = \square$$

1



: 5	
25	
15	
40	
20	
35	

: 3	
9	
15	
27	
18	
24	



*

: 4	
12	
20	
36	
16	
28	

: 9	
27	
81	
54	
72	
36	

2

$18 : 2 = \square$

$25 : 5 = \square$

$42 : \square = 6$

$81 : \square = 9$

$30 : 6 = \square$

$18 : 3 = \square$

$16 : \square = 8$

$\square : 3 = 7$

$64 : 8 = \square$

$54 : 6 = \square$

$20 : \square = 5$

$\square : 8 = 6$

$40 : 5 = \square$



$24 : 4 = \square$

$72 : \square = 9$

$\square : 8 = 6$

$28 : 7 = \square$

$63 : 9 = \square$

$24 : \square = 4$

$56 : \square = 8$

3

:	3	6
18		
12		
30		

:	4	8
16		
32		
24		

:	9	3
9		
27		
18		

:	6	4
24		
12		
36		

4

Lege und rechne!

20 Spielkarten werden an 4 Kinder verteilt.

--	--	--	--	--

32 Spielkarten werden an 4 Kinder verteilt.

--	--	--	--	--

24 Spielkarten werden an 6 Kinder verteilt.

--	--	--	--	--	--	--



21 Spielkarten werden an 3 Kinder verteilt.

--	--	--	--

30 Spielkarten werden an 5 Kinder verteilt.

--	--	--	--	--

27 Spielkarten werden an 3 Kinder verteilt.

--	--	--	--

28 Spielkarten werden an 4 Kinder verteilt.

--	--	--	--	--

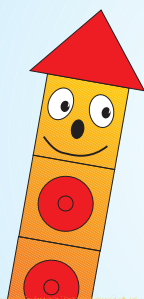
5

$35 : \square = 7$

$16 : \square = 4$

$24 : \square = 8$

$42 : \square = 6$



3
18 : <input type="text"/>
27 : <input type="text"/>
21 : <input type="text"/>

$18 : \square = 9$

$\square : 7 = 5$

$48 : \square = 8$

$\square : 4 = 7$

8
24 : <input type="text"/>
40 : <input type="text"/>
64 : <input type="text"/>